

ELECTRICAL OPERATED ROLLER SHUTTER

TECHNICAL SPECIFICATION SHEET

The Fitzpatrick Electrically Operated Roller Shutter can be supplied with many options, as standard a galvanised finish suitable for general industrial or commercial use with power operation. This type of shutter can be supplied with a wicket door for personnel access.

Commercial variations can have a perforated section to allow out of hours viewing or ventilation, whilst maintaining a high degree of security. A brick bond grille section which can allow up to 60% light through the shutter or a slotted lath which can create specific designs or patterns within the roller shutters. Fitzpatrick Roller Shutters are available in galvanised finish or can be powder coated to any BS or RAL standard colour range.

Galvanised curtain

Malleable iron end locks

Manual override system

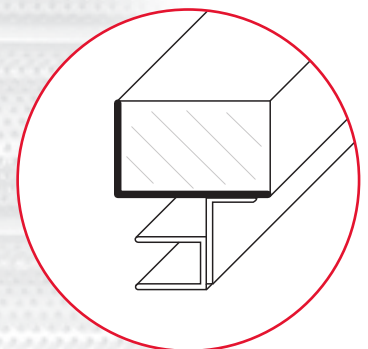
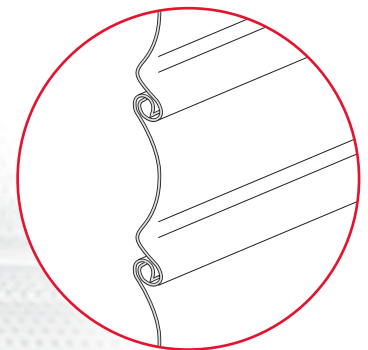
Remote operation available

Safety bottom edge available

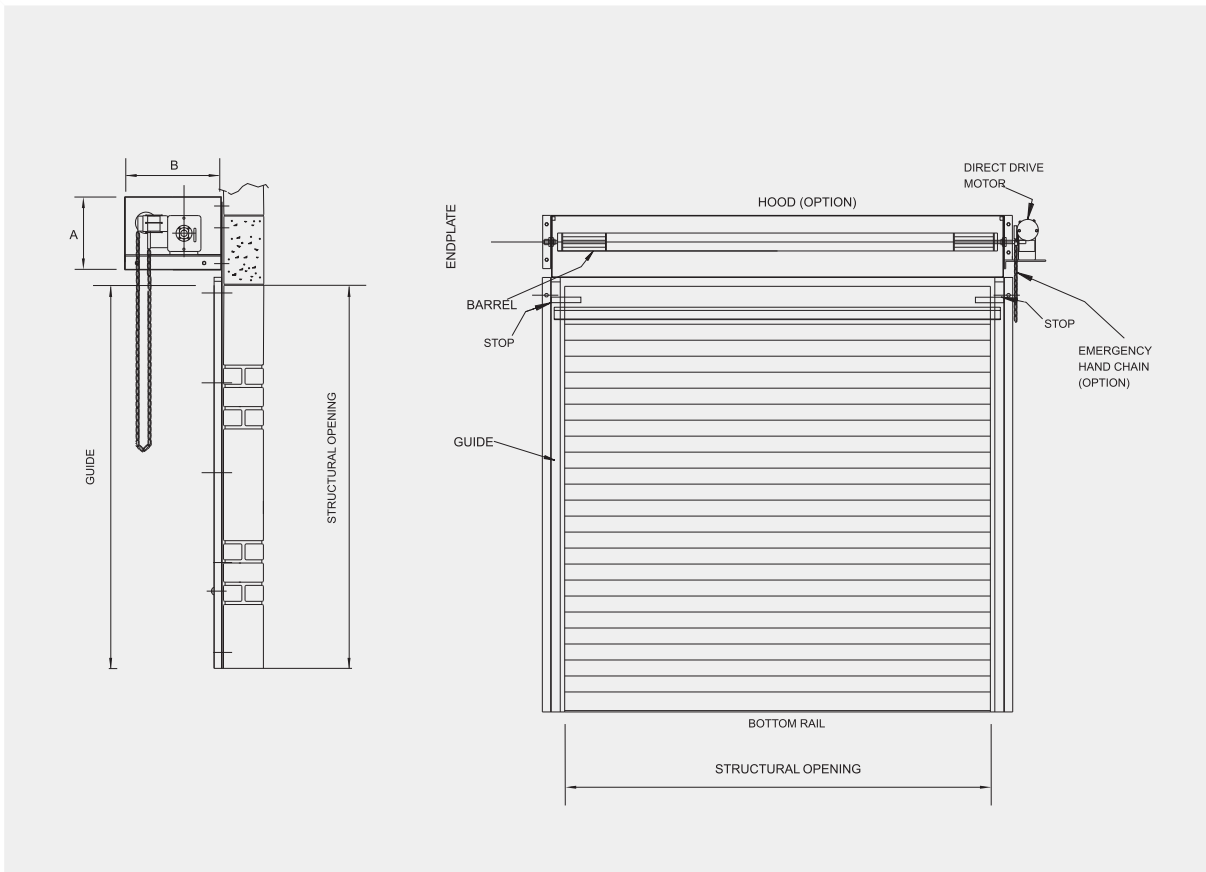
Plastisol finish available
on curtain

Powder coating option

75mm
Scrolled Lath



Typical Guide
Section



Curtain

Constructed from galvanised cold rolled interlocking curved sections of suitable gauge, each alternate lath is fitted with a malleable steel endlock to prevent lateral movement.

Bottom Rail

The base of the curtain is fitted with a steel angle reinforcing rail of adequate size forming an inverted 'T'.

Side Guides

Formed from cold rolled mild steel channel sections secured to the opening structure by continuous mild steel fixing angles.

Roller Assembly

Constructed from mild steel tube, mounted on bright steel shafts running on bearings, reduction drive gearing where applicable is by machine cut steel gears or chain drive to suit the size of opening.

Endplates

The Roller Assembly is supported by mild steel endplates with mounting angles for fixing to the support structure. On one endplate steel gears or chain drive are provided when applicable to provide drive to the barrel.

Hood (optional extra)

Formed from galvanised pressed sheet metal to enclose the rear of the shutter barrel and curtain assembly.

Electric Operation

Consists of a totally enclosed reduction geared motor, to suit size of shutter. Standard voltage is 415 volt 3 phase 50 Hz or single phase 250 volt with manual chain or hand crank override option.

Finish

All parts not galvanized are painted in one coat of protective primer.

Option

Plastisol Finish curtain in a range of standard colours to one face of the curtain can be provided or P.P.C. to BS or RAL standard colours.